

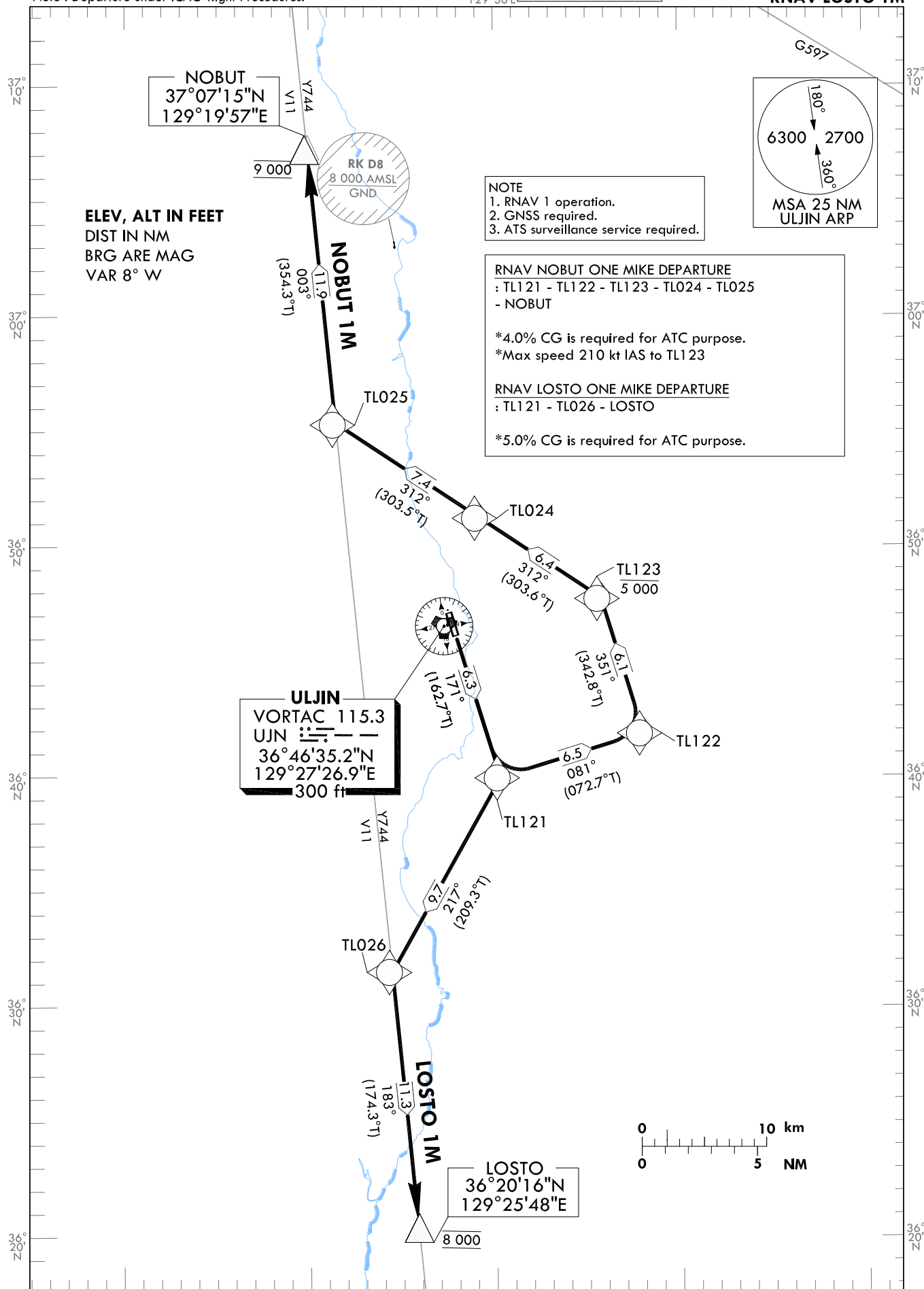
**STANDARD
DEPARTURE CHART
INSTRUMENT(SID) - ICAO**

Note : Departure under ICAO flight Procedures.

TRANSITION ALT 14 000
TRANSITION LVL FL 140

ULJIN	DEP	120.875
		317.65
ULJIN	TWR	118.55
		317.45

**ULJIN/ULjin(RKTL)
RWY 17
RNAV NOBUT 1M
RNAV LOSTO 1M**



Change : Information of departure call sign.

AERONAUTICAL DATA TABULATION

Standard Instrument Departure Procedure Coding Tables

RNAV NOBUT 1M

Serial Number	Path Descriptor	Waypoint Identifier	Fly-over	Course/Track °M(°T)	Distance (NM)	Turn direction	Altitude (ft)	Speed (kt)	Coordinates	VPA/ TCH	Navigation specification	Remarks
001	CF	TL121	-	171(162.7)	6.3	-	-	-210	36°39'57.5"N 129°30'16.9"E	-	RNAV 1	-
002	TF	TL122	-	081(072.7)	6.5	-	-	-210	36°41'53.2"N 129°37'60.0"E	-	RNAV 1	-
003	TF	TL123	-	351(342.8)	6.1	-	-5 000	-210	36°47'45.8"N 129°35'44.3"E	-	RNAV 1	-
004	TF	TL024	-	312(303.6)	6.4	-	-	-	36°51'17.2"N 129°29'07.5"E	-	RNAV 1	-
005	TF	TL025	-	312(303.5)	7.4	-	-	-	36°55'22.2"N 129°21'26.0"E	-	RNAV 1	-
006	TF	NOBUT	-	003(354.3)	11.9	-	@9 000	-	37°07'15.1"N 129°19'56.6"E	-	RNAV 1	-

RNAV LOSTO 1M

Serial Number	Path Descriptor	Waypoint Identifier	Fly-over	Course/Track °M(°T)	Distance (NM)	Turn direction	Altitude (ft)	Speed (kt)	Coordinates	VPA/ TCH	Navigation specification	Remarks
001	CF	TL121	-	171(162.7)	6.3	-	-	-	36°39'57.5"N 129°30'16.9"E	-	RNAV 1	-
002	TF	TL026	-	217(209.3)	9.7	-	-	-	36°31'29.8"N 129°24'24.6"E	-	RNAV 1	-
003	TF	LOSTO	-	183(174.3)	11.3	-	@8 000	-	36°20'15.8"N 129°25'48.3"E	-	RNAV 1	-

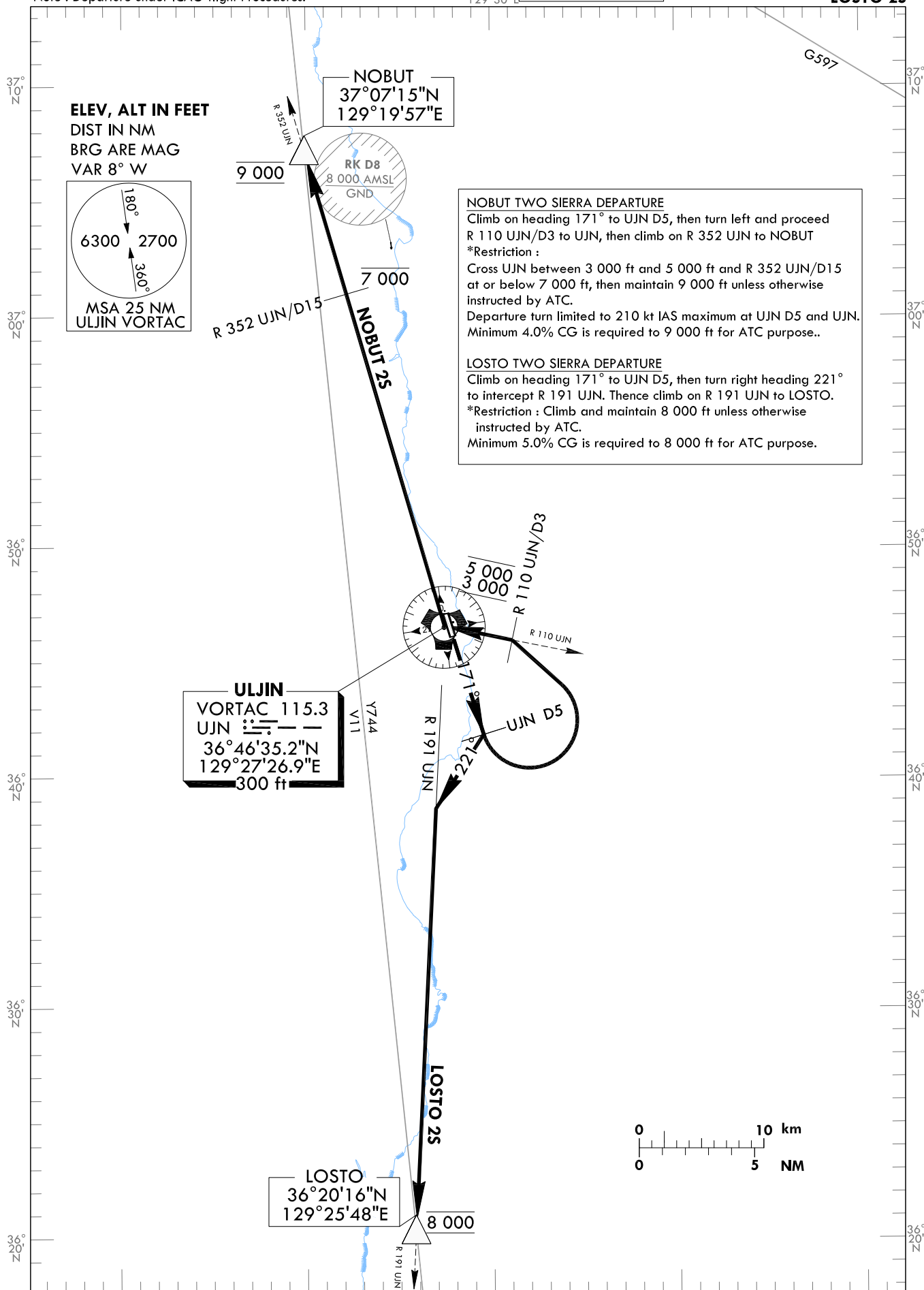
STANDARD DEPARTURE CHART
INSTRUMENT(SID) - ICAO

TRANSITION ALT 14 000
TRANSITION LVL FL 140

ULJIN	DEP	120.875
		317.65
ULJIN	TWR	118.55
		317.45

ULJIN/ULjin(RKTL)
RWY 17
NOBUT 25
LOSTO 25

Note : Departure under ICAO flight Procedures.



Change : Information of departure call sign.

INTENTIONALLY

LEFT

BLANK

STANDARD DEPARTURE CHART
INSTRUMENT(SID) - ICAO

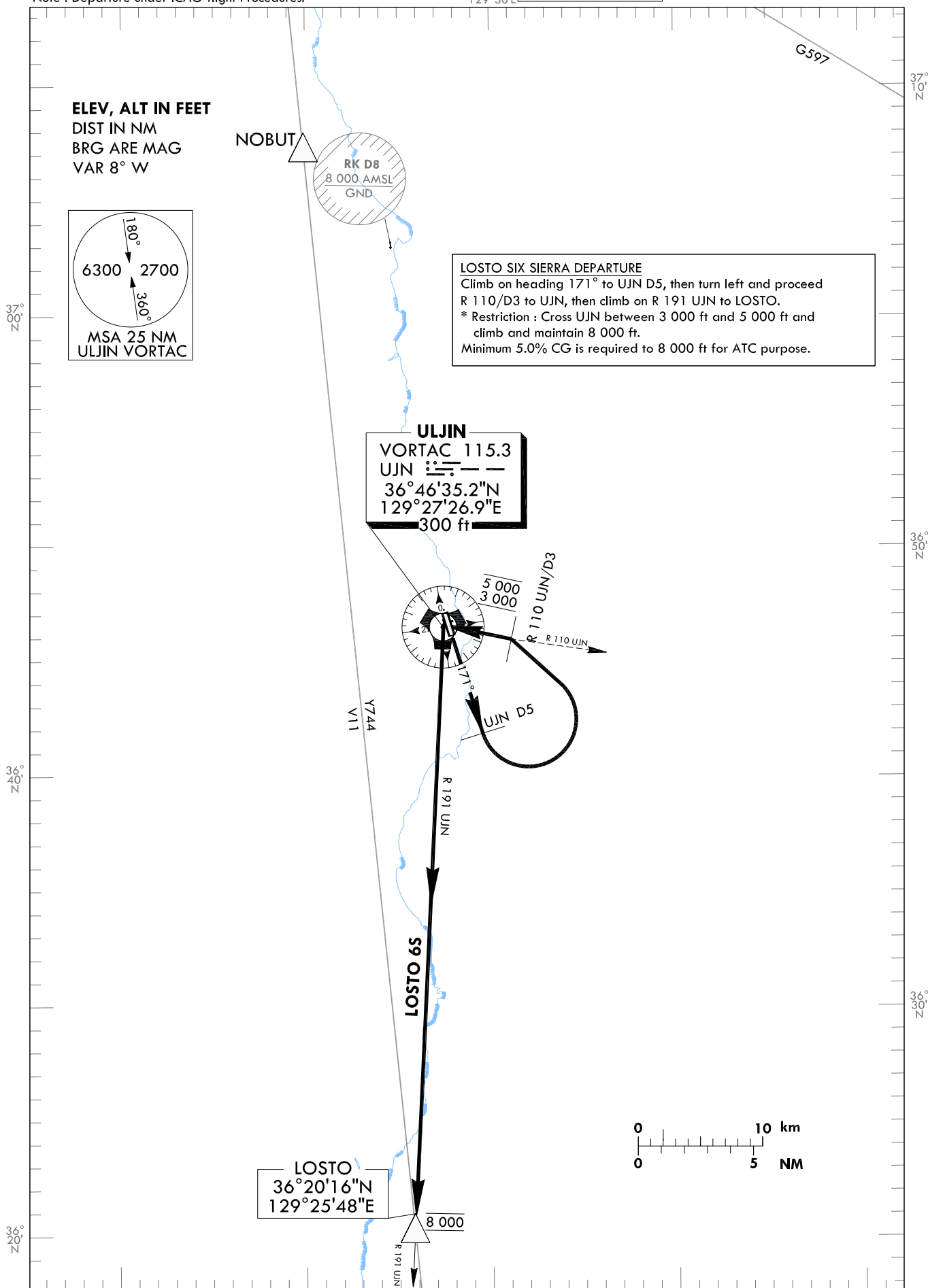
TRANSITION ALT 14 000
TRANSITION LVL FL 140

ULJIN	DEP	120.875
ULJIN	TWR	317.65
		118.55
		317.45

ULJIN/ULjin(RKTL)
RWY 17
LOSTO 6S

Note : Departure under ICAO flight Procedures.

129°30'E



Change : Information of departure call sign.

129°40'E

INTENTIONALLY

LEFT

BLANK

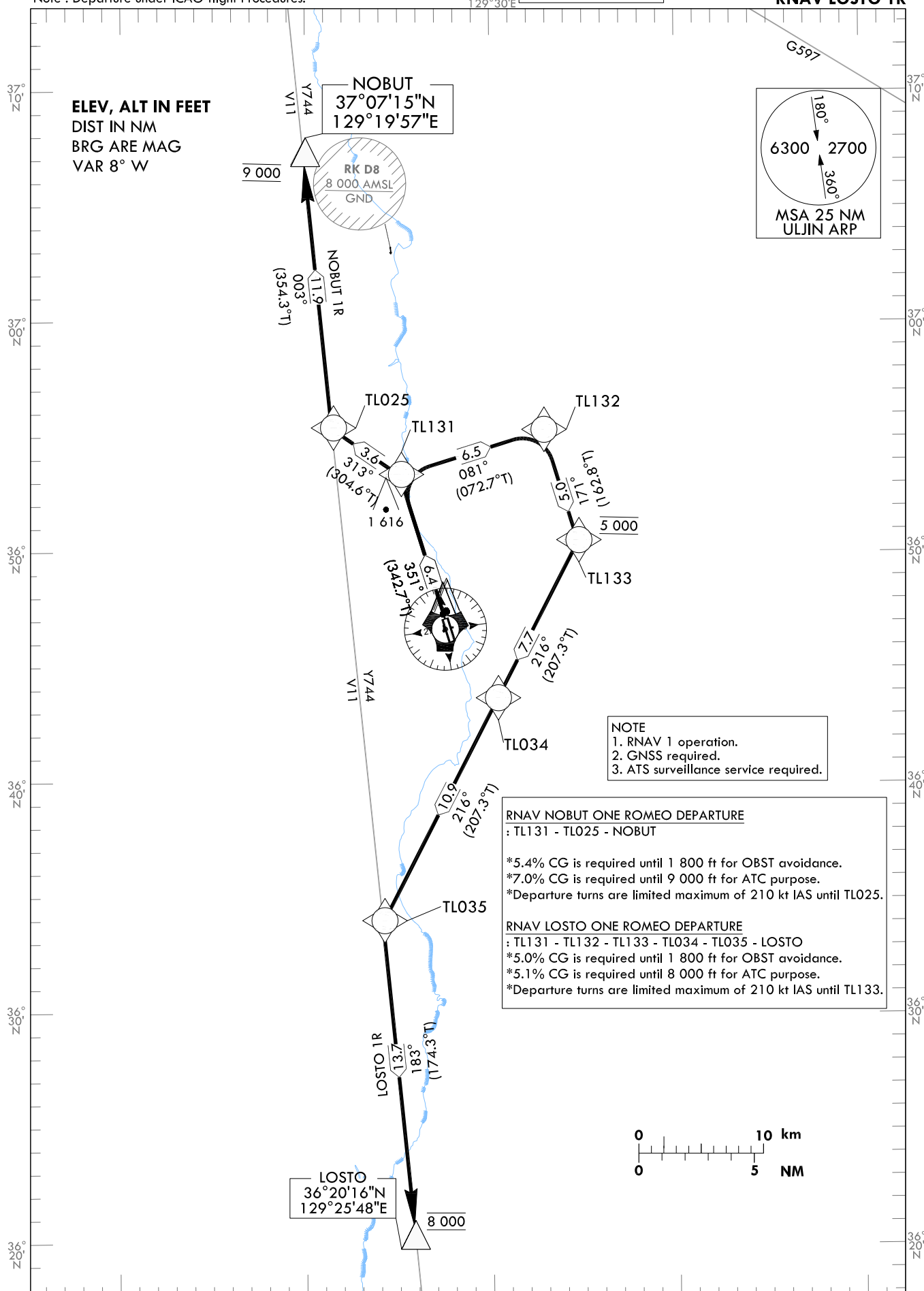
**STANDARD
DEPARTURE CHART
INSTRUMENT(SID) - ICAO**

Note : Departure under ICAO flight Procedures.

TRANSITION ALT 14 000
TRANSITION LVL FL 140

ULJIN	DEP	120.875
ULJIN	TWR	118.55
		317.45

**ULJIN/ULjin(RKTL)
RWY 35
RNAV NOBUT 1R
RNAV LOSTO 1R**



Change : Information of departure call sign.

AERONAUTICAL DATA TABULATION

Standard Instrument Departure Procedure Coding Tables

RNAV NOBUT 1R

Serial Number	Path Descriptor	Waypoint Identifier	Fly-over	Course/Track °M(°T)	Distance (NM)	Turn direction	Altitude (ft)	Speed (kt)	Coordinates	VPA/TCH	Navigation specification	Remarks
001	CF	TL131	-	351(342.7)	6.4	-	-	-210	36°53'20.2"N 129°25'06.2"E	-	RNAV 1	-
002	TF	TL025	-	313(304.6)	3.6	-	-	-210	36°55'22.2"N 129°21'26.0"E	-	RNAV 1	-
003	TF	NOBUT	-	003(354.3)	11.9	-	@9 000	-	37°07'15.1"N 129°19'56.6"E	-	RNAV 1	-

RNAV LOSTO 1R

Serial Number	Path Descriptor	Waypoint Identifier	Fly-over	Course/Track °M(°T)	Distance (NM)	Turn direction	Altitude (ft)	Speed (kt)	Coordinates	VPA/TCH	Navigation specification	Remarks
001	CF	TL131	-	351(342.7)	6.4	-	-	-210	36°53'20.2"N 129°25'06.2"E	-	RNAV 1	-
002	TF	TL132	-	081(072.7)	6.5	-	-	-210	36°55'16.2"N 129°32'50.5"E	-	RNAV 1	-
003	TF	TL133	-	171(162.8)	5.0	-	@5 000	-210	36°50'27.4"N 129°34'42.0"E	-	RNAV 1	-
004	TF	TL034	-	216(207.3)	7.7	-	-	-	36°43'35.6"N 129°30'17.9"E	-	RNAV 1	-
005	TF	TL035	-	216(207.3)	10.9	-	-	-	36°33'54.5"N 129°24'06.6"E	-	RNAV 1	-
006	TF	LOSTO	-	183(174.3)	13.7	-	@8 000	-	36°20'15.8"N 129°25'48.3"E	-	RNAV 1	-

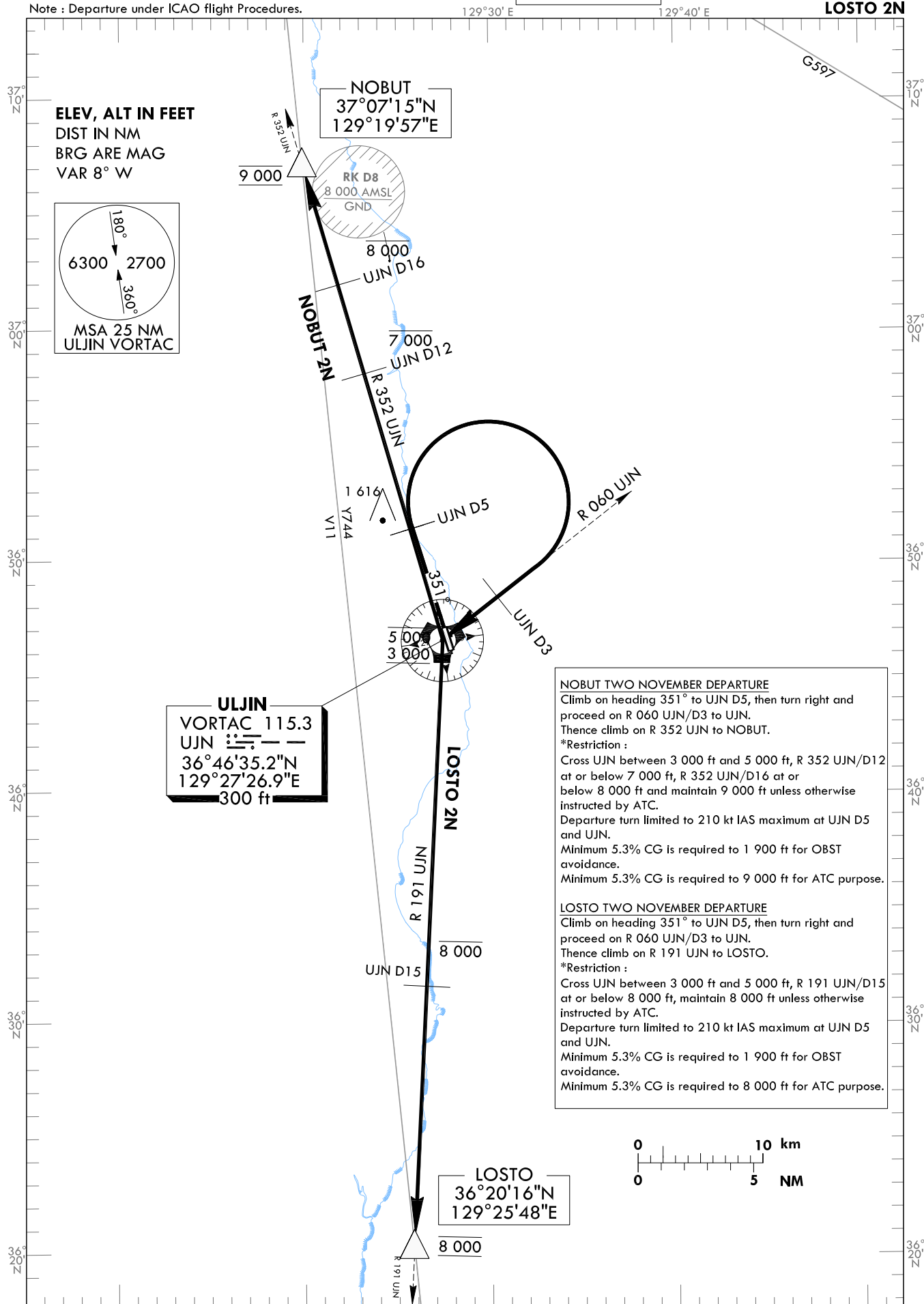
STANDARD DEPARTURE CHART
INSTRUMENT(SID) - ICAO

TRANSITION ALT 14 000
TRANSITION LVL FL 140

ULJIN	DEP	120.875
ULJIN	TWR	317.65
		118.55
		317.45

ULJIN/ULjin(RKTL)
RWY 35
NOBUT 2N
LOSTO 2N

Note : Departure under ICAO flight Procedures.



Change : Information of departure call sign.

INTENTIONALLY

LEFT

BLANK